

CLINIGEN

Trading Update 13th July 2021

Shaun Chilton: Chief Executive Officer

Nick Keher: Chief Financial Officer

Dr Henno Welgemoed: Global Medical Director

CAUTIONARY STATEMENT

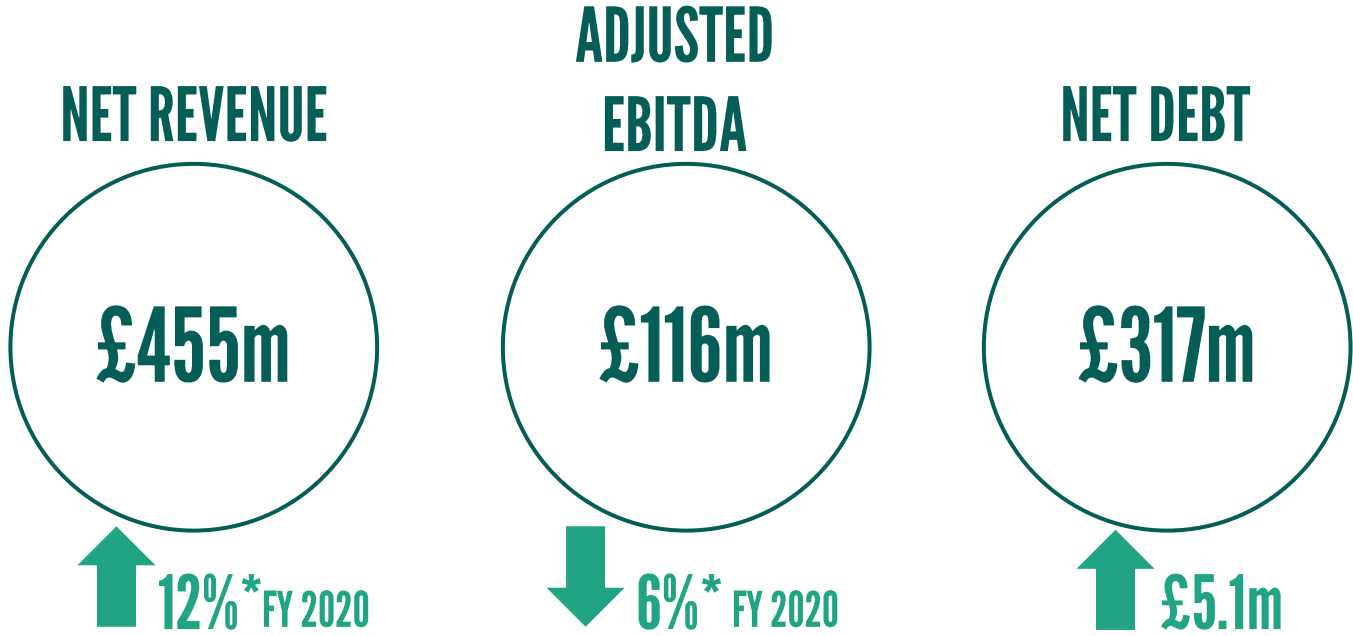
CLINIGEN

This presentation contains certain statements that are neither reported financial results nor other historical information. The information contained in this presentation is not audited, is for personal use and informational purposes only and is not intended for distribution to, or use by, any person or entity in any jurisdiction in any country where such distribution or use would be contrary to law or regulation, or which would subject any member of the Clinigen Group to any registration requirement. No representation or warranty, express or implied, is or will be made in relation to the accuracy, fairness or completeness of the information or opinions made in this presentation.

Statements in this presentation reflect the knowledge and information available at the time of its preparation. Certain statements included or incorporated by reference within this presentation may constitute “forward-looking statements” in respect of the Group’s operations, performance, prospects and/or financial condition. By their nature, forward-looking statements involve a number of risks, uncertainties and assumptions and actual results or events may differ materially from those expressed or implied by those statements. Accordingly, no assurance can be given that any particular expectation will be met and reliance should not be placed on any forward-looking statement. Additionally, forward-looking statements regarding past trends or activities should not be taken as a representation that such trends or activities will continue in the future. No responsibility or obligation is accepted to update or revise any forward-looking statement resulting from new information, future events or otherwise. Nothing in this presentation should be construed as a profit forecast.

This presentation does not constitute or form part of any offer or invitation to sell, or any solicitation of any offer to purchase any shares in the Company, nor shall it or any part of it or the fact of its distribution form the basis of, or be relied on in connection with, any contract or commitment or investment decision relating thereto, nor does it constitute a recommendation regarding the shares of the Company or any invitation or inducement to engage in investment activity under section 21 of the Financial Services and Markets Act 2000. Past performance cannot be relied upon as a guide to future performance. Liability arising from anything in this presentation shall be governed by English Law, and neither the Company nor any of its affiliates, advisors or representatives shall have any liability whatsoever (in negligence or otherwise) for any loss howsoever arising from any use of this presentation or its contents or otherwise arising in connection with this presentation. Nothing in this presentation shall exclude any liability under applicable laws that cannot be excluded in accordance with such laws.

FINANCIAL HIGHLIGHTS



EBITDA expected to be within £114m-£117m range as guided in June

Net Debt of no more than £317m (excluding IFRS 16) representing 2.8x leverage meaningfully below banking covenant of 3.5x

Expect double digit EBITDA growth in FY22 and remain focused on debt paydown

* Growth numbers for net revenues and Adjusted EBITDA are on a constant currency and organic basis. All excluding the contribution from the UK Compounding business.
NOTE: All numbers are unaudited



**APPROVED FOR METASTATIC
RENAL CELL CARCINOMA AND
METASTATIC MELANOMA**

**ON NCCN AND SITC
GUIDELINES FOR TREATMENT
IN USA**

**REQUIRES ADMINISTRATION IN
SPECIALISED CENTRES WITH
ACCESS TO ICU FACILITIES**

**ON-LABEL USAGE
REDUCING DUE TO
THERAPEUTIC ADVANCES**

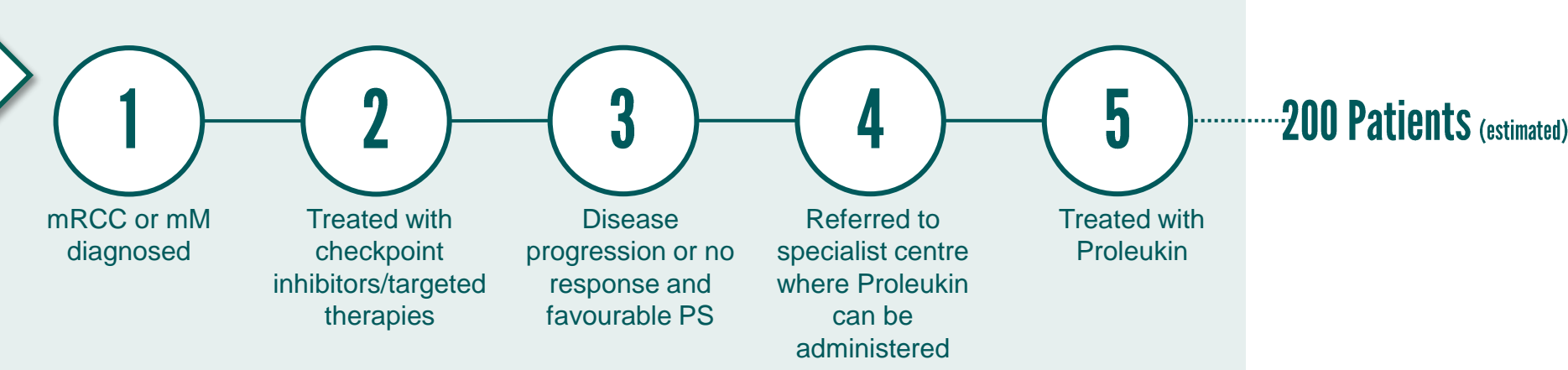
**USED IN MANUFACTURE AND
ADMINISTRATION OF
ADOPTIVE CELL THERAPY**

**USED FOR ALTERNATIVE
INDICATIONS (cGVHD,
NEUROBLASTOMA, ALS)**

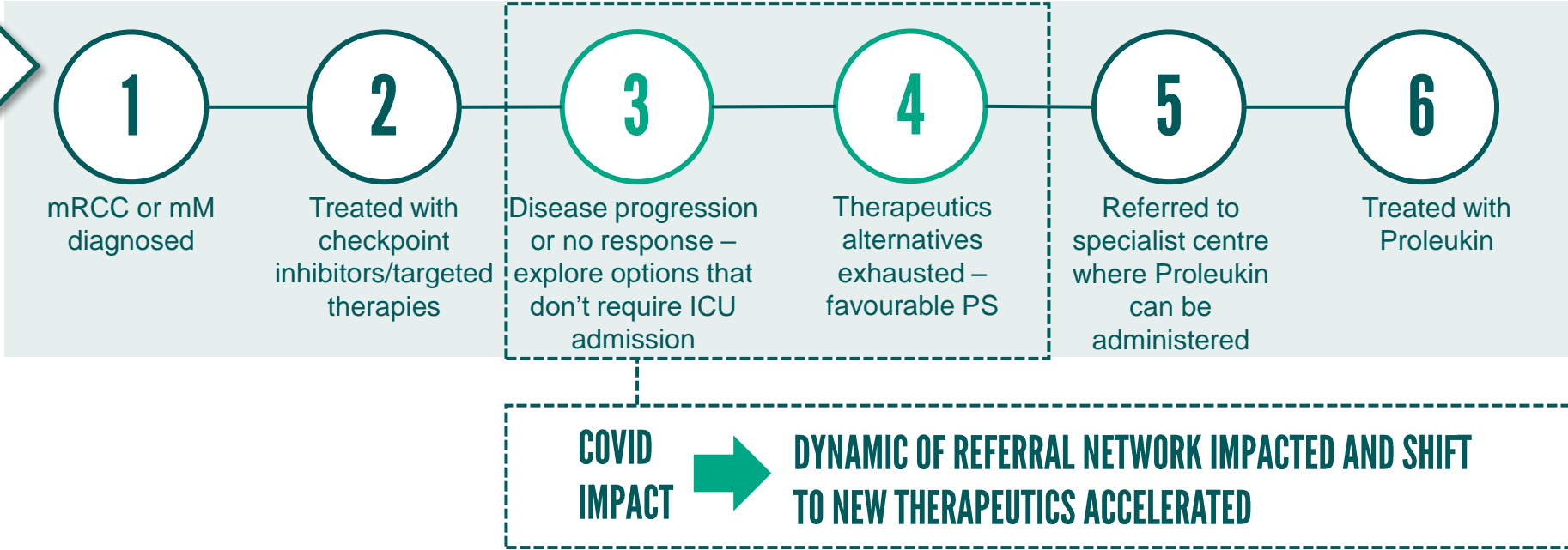
PROLEUKIN ON-LABEL USAGE



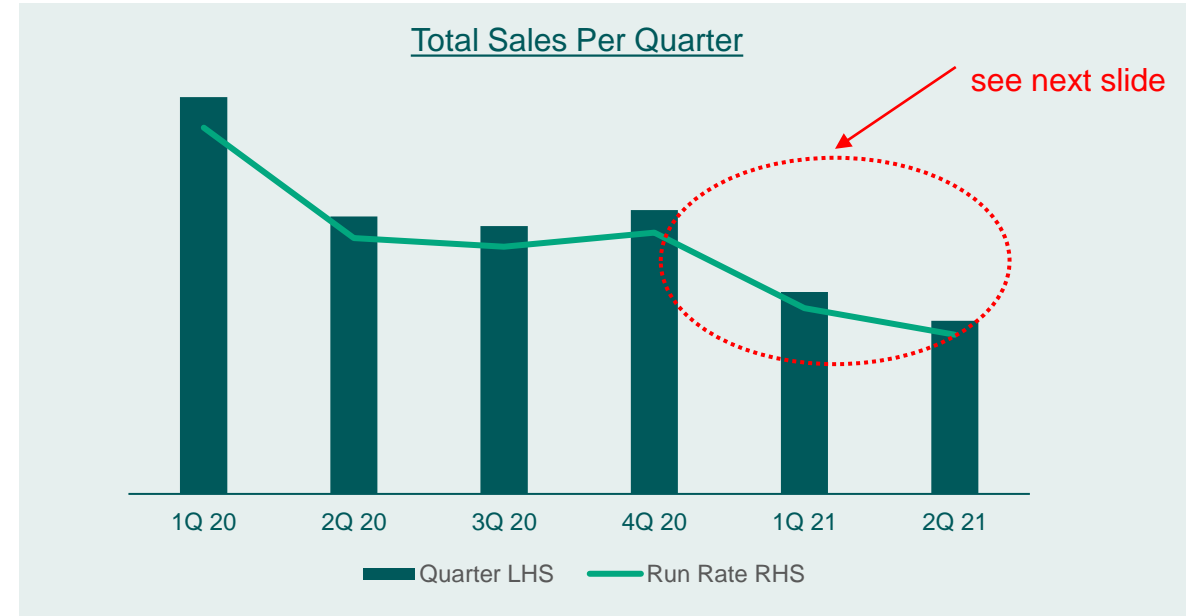
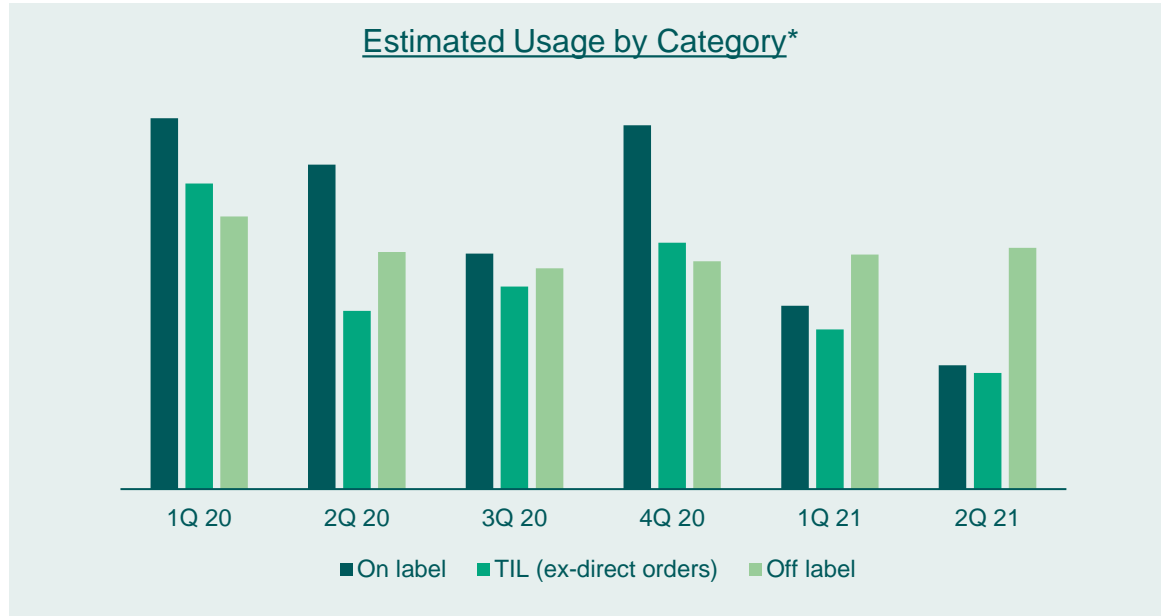
Pre-COVID



During-COVID



Proleukin Demand Last 6 Quarters



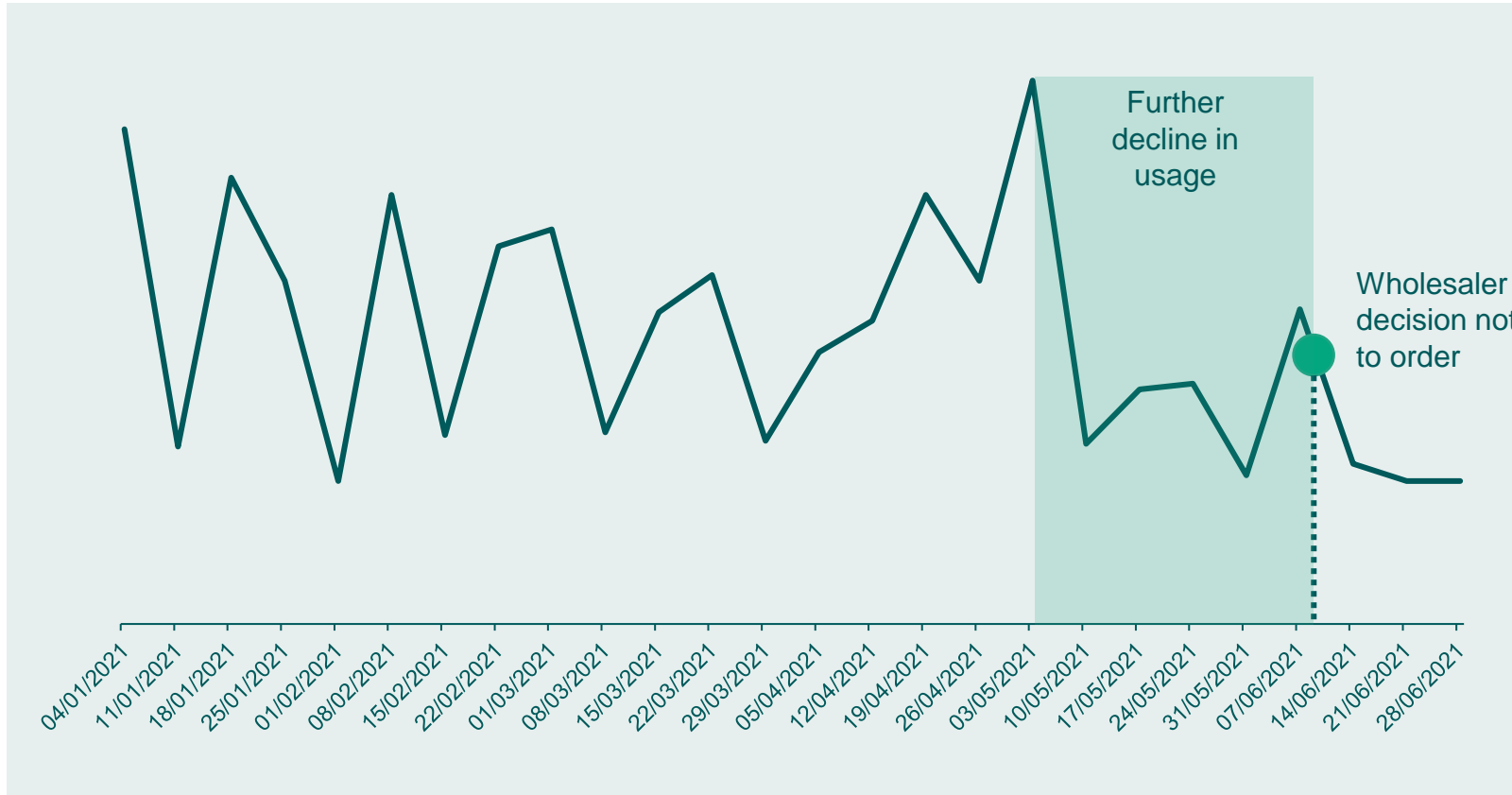
Overall demand reduced in last 2 quarters compared to previous 9 months

Demand for off-label use has remained flat in last 12 months

Demand for on-label use has reduced

* Category sales estimated based on total vial usage per patient
 NOTE: all data based on company records and unaudited

Proleukin Weekly Sales Last 6 Months



Erratic weekly sales ever-present since acquisition given low number of on-label patients.

Increasing volatility across Q1 and Q2

Weaker overall demand coincided with phasing of bi-annual wholesaler order

Mitigating factors to offset the weakening demand targeted, but failed to materialise

NOTE: all data based on company records and unaudited

ON-LABEL

Continued treatment option for reduced number of on-label patients.

Appropriate efforts to maintain base of high dose prescribers in a more focused approach.

CELL THERAPY

30+ pharma companies developing adoptive cell therapies with Proleukin a part of manufacture and administration (most advanced being lovance).

LOW DOSE

Continue to supply Proleukin into clinical trials for low dose treatments.

MIROCALS ALS study expected to read out Q4 CY 2021.

STRONG UNDERLYING BUSINESS



SERVICES		PRODUCTS	
Highest booked revenue value of clinical packaging, labelling, distribution	Won highest number of Managed Access Programs	Revenue growth in developed products	Strong performance in Partnered with strong portfolio growth
\$100m	+30 NET	40%+	+27 NET
36 COVID-19 related business wins in FY21 (+15 in H2) = 52 in total			

* Note: all figures are unaudited.

SIMPLIFIED PLATFORM



June 2020



- Simplified platform to align with customer, and drive further synergies
- Further simplification through disposal of non-core UK Specials and Aseptics business

June 2021



579
Clients
↑ 24

43
Shared clients
↑ 6

10
Referral wins
↑ 6

* Note: all figures are unaudited.

CLINIGEN

THANK YOU